

Tree Advisory Committee 2019

Q1 Meeting Minutes 04/25/19

Tree Campus Standards: There are five standards that must be met for Tree Campus USA recognition

- Campus Tree Advisory Committee
- Campus Tree Care Plan
- Campus Tree Program with Dedicated Annual Expenditures
- Arbor Day Observance
- Service-Learning Project

Tentative 2019 Meeting Dates: April 25th, June 13th, August 28th, and November 20th

April 25th Agenda

11am-12pm, UL2115G

Attendees: Debbie Koliba, Thomas Lewis, Teodora Durbin, Jessica Davis, Jesse Beck, Deb Ferguson, Dylan Patterson

- Tree Campus recognition
 - 2012 - 2018
- Bee Campus recognition
 - 2017 - 2018
- 50th anniversary Arbor Day tree planting
 - Planted 50 trees along University Blvd. and 8 larger trees in the green space adjacent to the tower
 - 79 volunteers signed up
- KIB Adopt A Block/Campus
 - First university in state/country
- New internship – CFS/Sustainability
 - Partnership between CFS and Office of Sustainability
 - Manage Tree/Bee Campus, service events, stars reporting
- Mulch Mondays/Turf Tuesdays
 - 32 total volunteers
- CEES Service Project
 - Project w Ryan – mapping trees on campus
 - 120 past volunteers did 1/5 of campus
 - Surveyed: scientific name, common name, tree class, condition, native or not, DBH, height, other notes
- Sustainability Map Tab

- Interactive map addition – can link to volunteer signups and educational videos
- Campus Gardens getting added to 3D overlay
- Sustainable Landscape High Performance Standards Analysis
 - Graduate project – goal to determine what qualifies as a High-Performance Landscape (HPL) and how these variables can be assessed
 - Assessed on landscape maintenance, water quality and quantity, energy consumption, human health, wildlife habitat, and visual appeal
- Biodiversity Assessment
 - For STARS reporting – Kathleen Mars and Patricia Clark are possibilities
- Library native planting
- CEES – Welcoming Campus Grant
 - Restoring Greenways, Connecting Communities
 - Expands on Lily ARBOR
- Debbie is interested in connecting O’Neill and Office of Sustainability on future projects for graduate or undergraduate students
- UL Native Planting
 - Due to sewer line construction – most landscaping will be torn up
 - Plans call for trees and a pollinator garden to soften the feel of the building – has been submitted for review by Capital Projects
- Greening IUPUI Grants
 - UL Seed Library - \$13,034
 - Seed lending program and education
 - GreenWorks - \$12,000
 - Electrify portion of hand held two cycle grounds equipment
- Thomas Lewis interested in using the Bees for a video class project assignment
 - Would follow the process of the hive – from the beginning of the season to when the honey is extracted
- Bees at IUPUI
 - O’Neill is running another story on the bees
 - The Den – Urban Beekeepers - <https://theden.iupui.edu/organization/bees>
 - News Article - <https://news.iu.edu/stories/2018/07/iupui/inside/10-beekeeping-sessions-bring-summer-buzz-to-campus.html>
 - Youtube Video
 - https://www.youtube.com/watch?time_continue=1&v=0qyEd2lu_3g



IUPUI Office of Sustainability

Tree Advisory Council Meeting

INDIANA UNIVERSITY–PURDUE UNIVERSITY INDIANAPOLIS

Tree Campus USA Recognition



Congratulations!

IUPUI (Indiana University - Purdue University,
Indianapolis) Received 2018 Tree Campus USA Recognition



Bee Campus USA Recognition

Congratulations! Bee Campus USA - IUPUI Certification Renewed! Inbox x



Phyllis Stiles <phyllis.stiles@xerces.org>

Thu, Apr 4, 10:28 AM



to Steven, Teodora, dpjohnson, Thomas, Kathy, Teresa, Mark, Darci, Debbie, Jessica, sustindy, jjarzen, Deborah, me, raschafe, jessbeck, rcschnei ▾

Dear IUPUI Friends:

It gives us great honor and joy to inform you that you have completed all the rigorous requirements for Bee Campus USA renewal for 2019! We truly appreciate your efforts to capture the excitement of a year in the renewal forms. Most importantly, you continue to inspire your campus and community to take care of the pollinators that play a vital role in sustaining our planet.

We have published your narrative report [here](#) to inspire other campuses toward conservation action. If you would like to change anything, just let us know.

We have also attached a press release template in hopes that you will want to share your good news with the media.

warmly, Phyl

Phyllis Stiles, Founder & Pollinator Champion

Bee City USA, An Initiative of the Xerces Society for Invertebrate Conservation

503-395-5367

phyllis.stiles@xerces.org

www.beecityusa.org

www.xerces.org



**XERCES
SOCIETY**

for Invertebrate Conservation

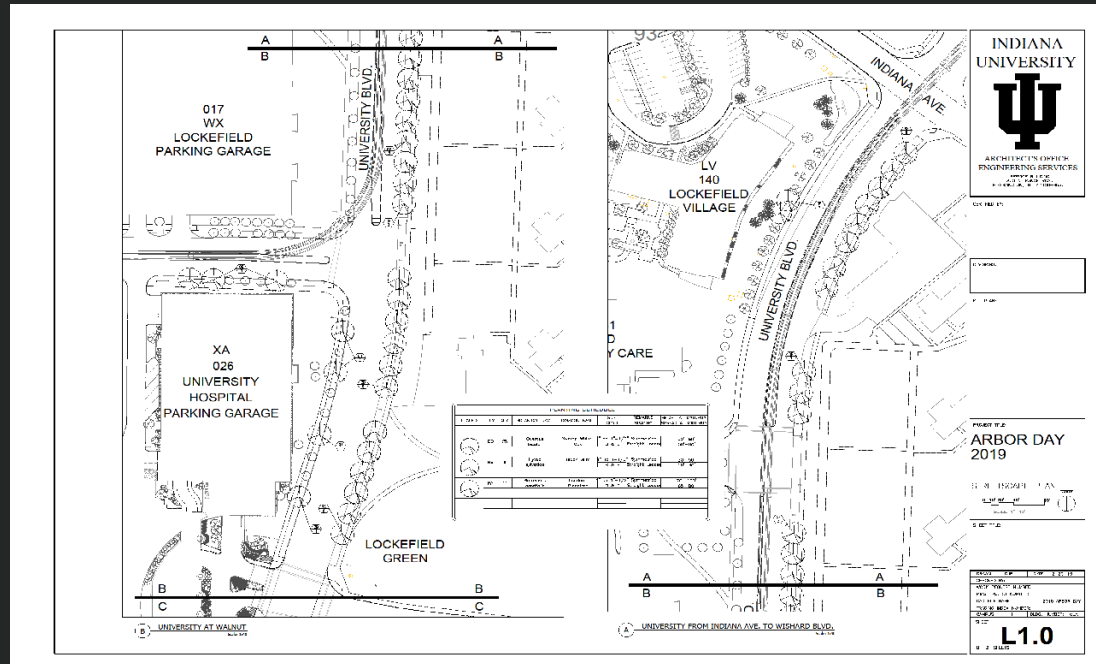


50th Anniversary Tree Planting

Date: Friday, April 26th

Time: 9am-12pm

Location: Meet at the corner of University Blvd and W North Street in Lockfield Green



KIB Adopt a Block/Campus



ADOPT-A-BLOCK

Are you the sort of person who picks up stray scraps of paper when you're on a walk? Are you the person that would pick up trash if you had a litter grabber? Do you lead by example and get your friends and neighbors to help too? Thought so! You're one of us, a KIB Adopt-A-Block Captain.

EVERY BLOCK COUNTS

The Adopt-A-Block program empowers you to bring beautification and neighborhood revitalization down to the city's smallest unit, the block. We provide free tools and resources, and you keep your block clean of litter on an ongoing basis. Plus, you get the awesome title "Block Captain" for leading your block's beautification.



Beautify IUPUI: Mulch Mondays and Turf Tuesdays

Mulch Monday Volunteers: 5

Turf Tuesday Volunteers: 13

CYC Mulch Project: 14



Sustainable Landscape Intern

- Partnership between CFS and IUPUI Office of Sustainability
- Goal to strengthen commitment to sustainable grounds practices
- Manage Bee and Tree Campus programs
- Coordinate service events
- Assist with STARS reporting



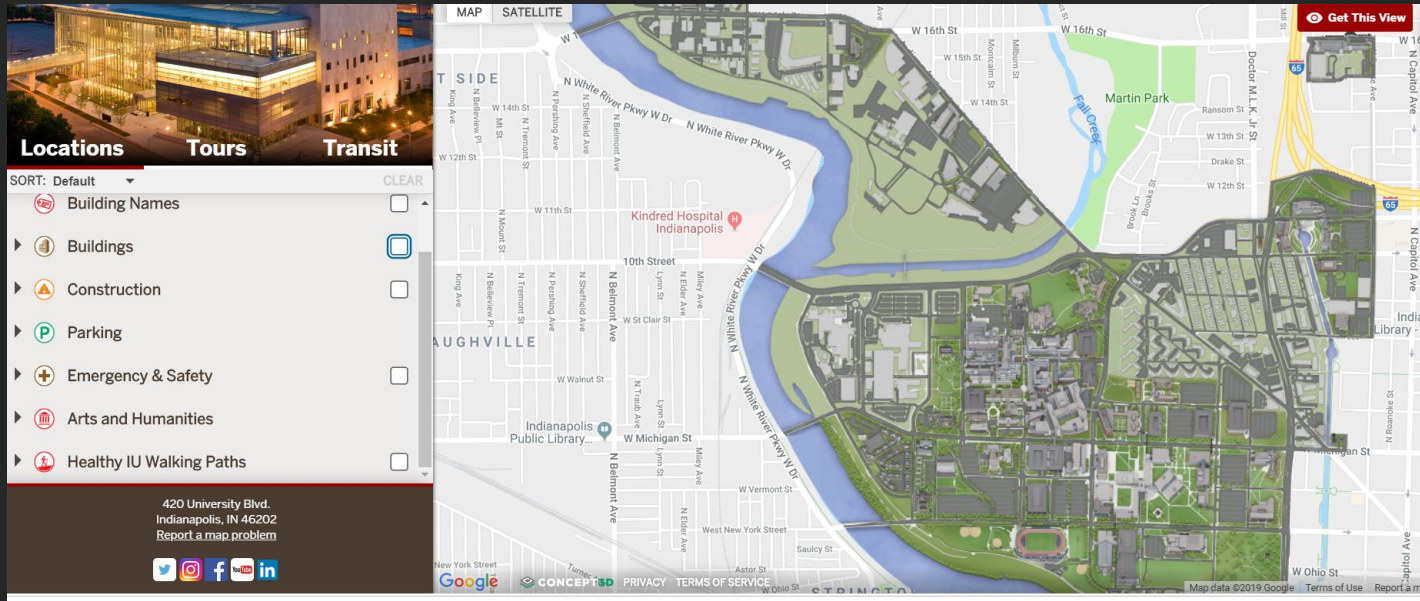
CEES Service Project – GIS Tree Inventory

- September and October
- GIS Tree Inventory led by Ryan Schafer – ArcMap Collector
- 120 volunteers total
- Surveyed: Scientific name, common name, tree class, condition, native or not, DBH, height, other notes
- Completed 1/5 of campus – will be continued until all of campus is reported on



Sustainability Map Tab

- Addition of Gardens to map graphics
- Categories: LEED Buildings, Education and Health, Energy and Waste, and Food
- Can link to volunteer signups, videos, etc



Biodiversity Assessment

OP 10: Biodiversity

1-2 points available

A. Credit Rationale

This credit recognizes institutions that have a biodiversity management strategy designed to identify vulnerable ecosystems and species on campus and prevent, manage, and/or remediate damage to natural habitats and sensitive areas. Identifying and protecting the integrity of natural ecosystems can enhance the surrounding environment and improve the quality of campus and community life.

B. Criteria

Institution conducts one or both of the following:

- An assessment to identify endangered and vulnerable species (including migratory species) with habitats on institution-owned or -managed land;

And/or

- An assessment to identify environmentally sensitive areas on institution-owned or -managed land.



Biodiversity Assessment

- Being taken on by either Kathleen Mars (Biology) or Patricia Clark (Ecology and Evolution Lab)
- Will ideally be a class project, honors project, or special assignment that can be expanded on and replicated in the future



CEES Welcoming Campus Innovator Grant

- Grant awarded to support restoration efforts and community engagement along White River Corridor
- *Restoring Greenways, Connecting Communities*
- Expands on Lilly ARBOR project, will be conducted along a greenway that forms the western edge of IUPUI and extends from White River State Park, through the ARBOR, to the 10th street bridge
- Goal to make ARBOR site more accessible and better connected to neighboring trails – also includes educational materials



High Performance Landscapes: Graduate Project

- *Definition: Landscapes that can perform many functions at once...must provide cleaner air, a cooler environment, and sinks for stormwater, in addition to more opportunities for healthy activities including more extensive walking and biking*
- Goal to determine what qualifies as a High-Performance Landscape (HPL) and how these variables can be assessed
- 5 'landscaping spaces' on campus will be assessed: ICTC, Glick, UL, North Hall, and Taylor Hall
- Assessed on landscape maintenance, water quality and quantity, energy consumption, human health, wildlife habitat, and visual appeal



Library Native Planting

- Honors project
- Currently in draft form



Greening IUPUI Grants

University Library Seed Library

- Funded \$13,034

GreenWorks

- Funded \$12,000
- Will serve to electrify a portion of the CFS grounds equipment



Summary of this years Projects/Goals

- Renew Tree Campus and Bee Campus USA
- IUPUI will partner with KIB to 'Adopt a Campus'
- Define dates for future CEES service-learning opportunities – namely the GIS Tree Inventory and the Welcoming Campus Innovator Grant
- Increase turnout to Beautify IUPUI events
- Publish Sustainability tab on IUPUI interactive map
- Utilize Greening IUPUI Grant funds to begin electrifying grounds equipment and create the UL Seed Library
- Conduct a Biodiversity assessment of campus – for STARS reporting purposes
- Possible native planting at UL
- Define what is an HPL and rank IUPUI 'landscaping spaces' on these variables